

Common Flow Chart Symbols



Terminator

Indicates the beginning or end of a program flow in your diagram.



Decision

Indicates a decision point between two or more paths in a flowchart.



Process

Indicates any processing function.



Data

Can represents any type of data in a flowchart.



Subroutine

Indicates a predefined (named) process, such as a subroutine or a module.



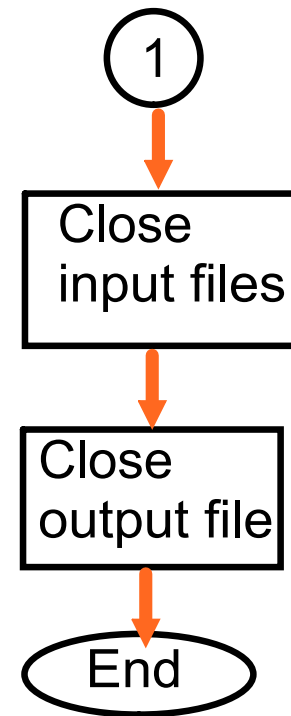
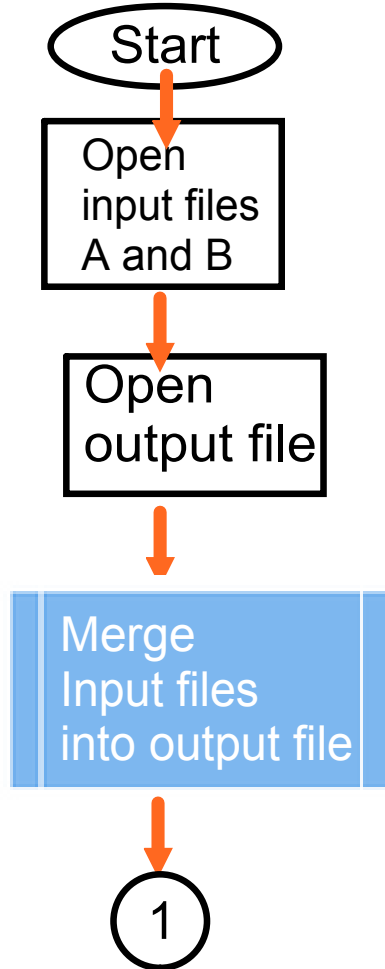
Connector

Indicates an inspection point.

Merge Files

- 1) There are two files, both contains names that have been sorted ascending (in alphabetical order)
- Create a block diagram (flow chart) of a process that will read both files to create a single output file containing a merged list of names from both files. Review the Lab instructions examples of a flow chart.
 - Write pseudo-code that implements the diagram from part A.

File A	File B
Bob	Carol
Pete	David
Sam	Jean
Samantha	Linda
Thomas	Shawn
Zach	



Merge Files

Merge input file A and input file B into output file

File A

Bob

Pete

Sam

Samantha

Thomas

Zach

File B

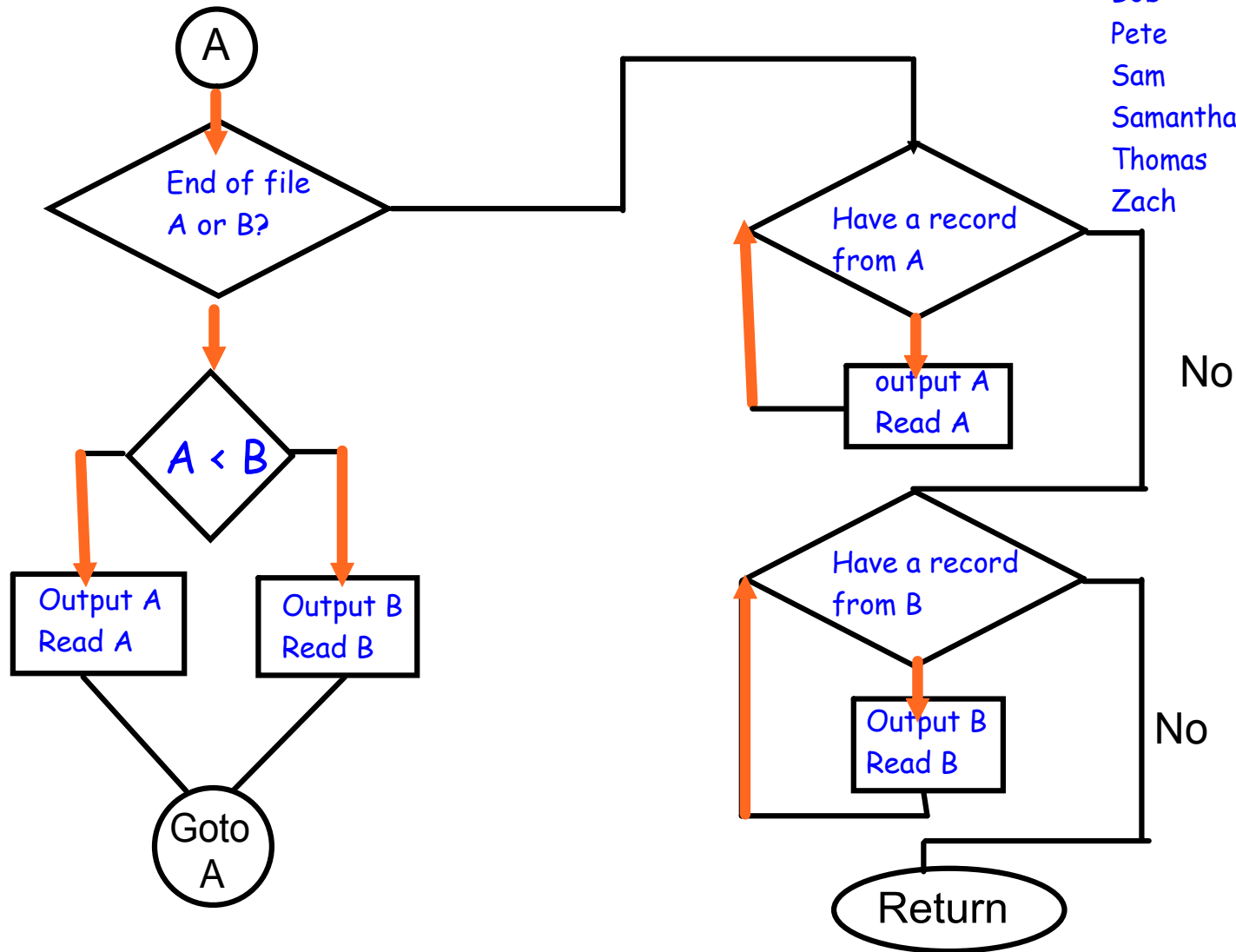
Carol

David

Jean

Linda

Shawn



Merge Files

Merge input file A and input file B into output file

```
Open input files A and B
Open output file C
While (not EOF(A) and not EOF(B) ) do:
    if you don't have a record from A, read A
    if you don't have a record from B, read B
    If still not EOF(a) and not EOF(b)
        then compare A to B
            if A < B then
                output A
                you don't have a record from A
            If A >= B then
                output B
                you don't have a record from B
        end while
While not EOF(A)
    if you have a record from A then output A
    Read A
end while
While not EOF(B)
    if you have a record from B then output B
    Read B
end while
Close input files A and B
Close output file C
```